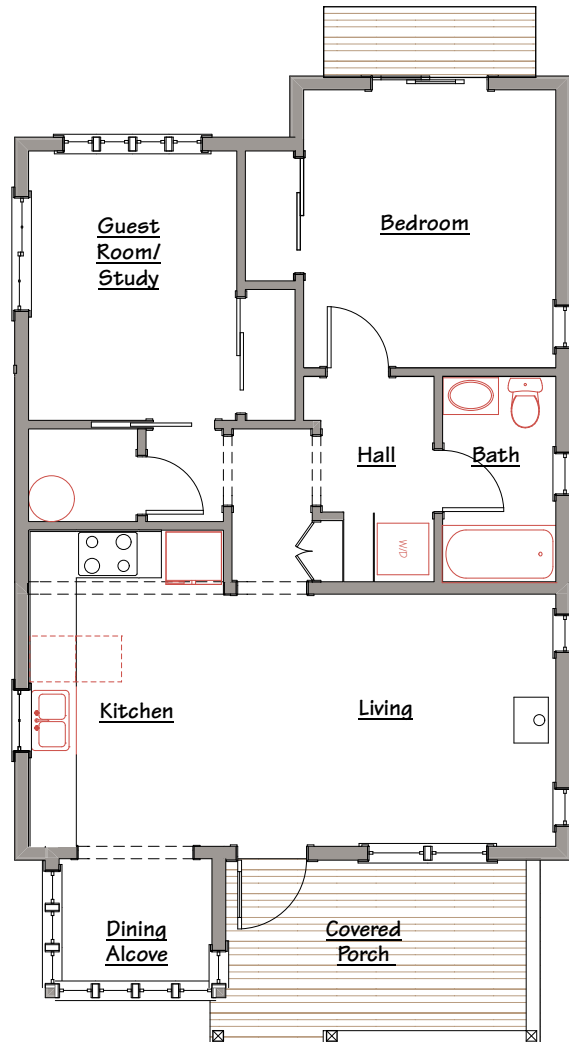


FIRST FLOOR

Living	11'-0" x 14'-6"
Kitchen	13'-9" x 8'-6"
Dining Alcove	6'-0" x 6'-8"
Guest/Study	11'-9" x 9'-0"
Bathroom	9'-0" x 5'-0"
Bedroom	12'-2" x 11'-0"

HEATED SPACE 833 sq ft.

Porch	8'-0" x 14'-0"
Footprint (including porch)	42'-0" x 24'-0"



Floor Plan

© Ross Chapin Architects • For more information on ordering plans, go to www.rosschapin.com



ROSS CHAPIN ARCHITECTS

Post Office Box 230 • 195 Second Street • Langley, Washington 98260
 Ph: (360) 221 2373 • Fx: (360) 221 8603 • Em: inquiry@rosschapin.com

Betty Mae